

# How does variable life insurance work?

<https://www.protective.com/life-insurance/universal/variable>

Disclaimer to include at bottom of page:  
\*Though interest is charged on loans, in general, loans are not taxable.  
Withdrawals are taxable to the extent they exceed basis in the policy.  
Loans outstanding at policy lapse or surrender before the insured's death will cause immediate taxation to the extent of gain in the policy. Unpaid loans and withdrawals reduce cash values and policy benefits. The tax treatment of life insurance is subject to change.



You pay premiums on your policy.  
Premium expense charges are deducted.



Tax advantaged withdrawals and loans\* are available after a certain period of time.



You receive tax-advantaged benefits for life needs and retirement.

The balance of your premium payments (not premium) is allocated to your choice of investment options. Any earnings grow tax-deferred while in the policy.



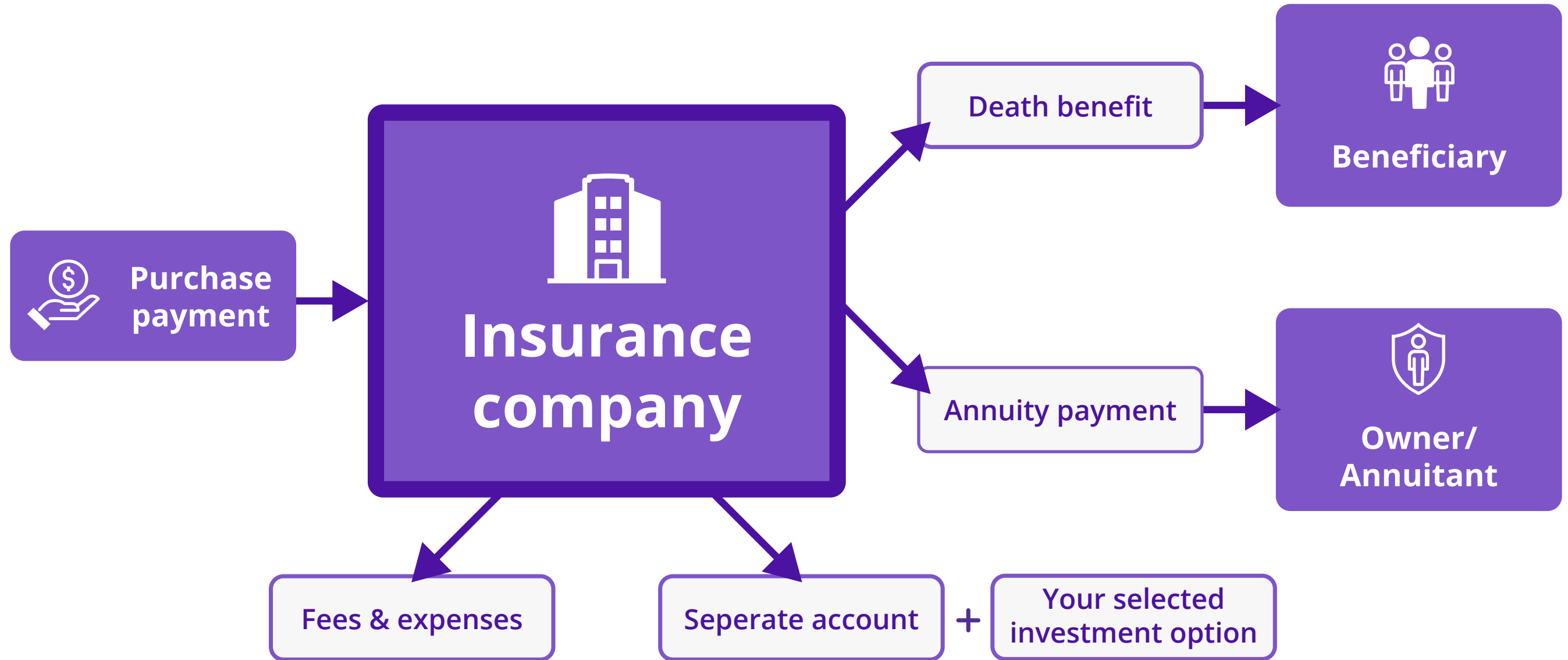
Your beneficiary receives a tax-free death benefit upon your passing.



We deduct certain monthly charges from the policy value once the policy is issued to you.

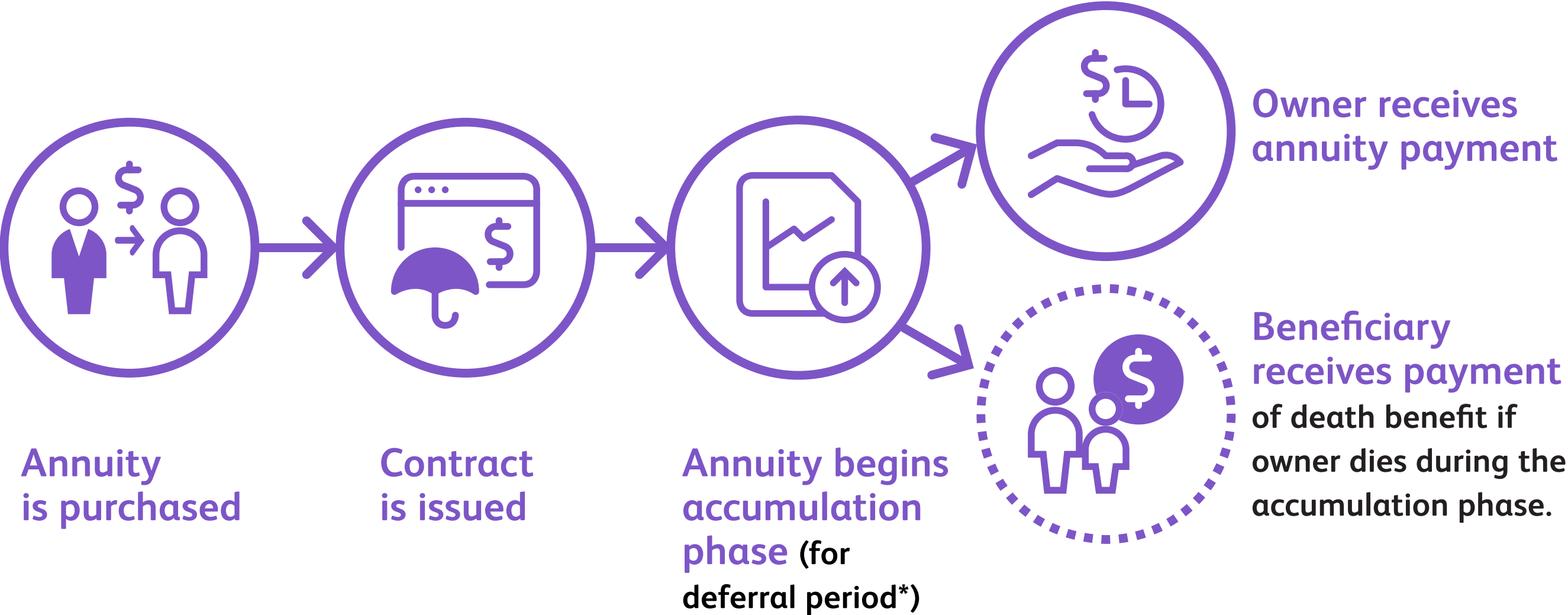
## How do variable annuities work?

<https://www.protective.com/annuities/variable>



**How an annuity works**  
<https://www.protective.com/annuities>

Disclaimer to include at bottom of page:  
\*An immediate annuity will not have an accumulation phase



**Annuities typically have two phases:**

<https://www.protective.com/annuities>

## Accumulation

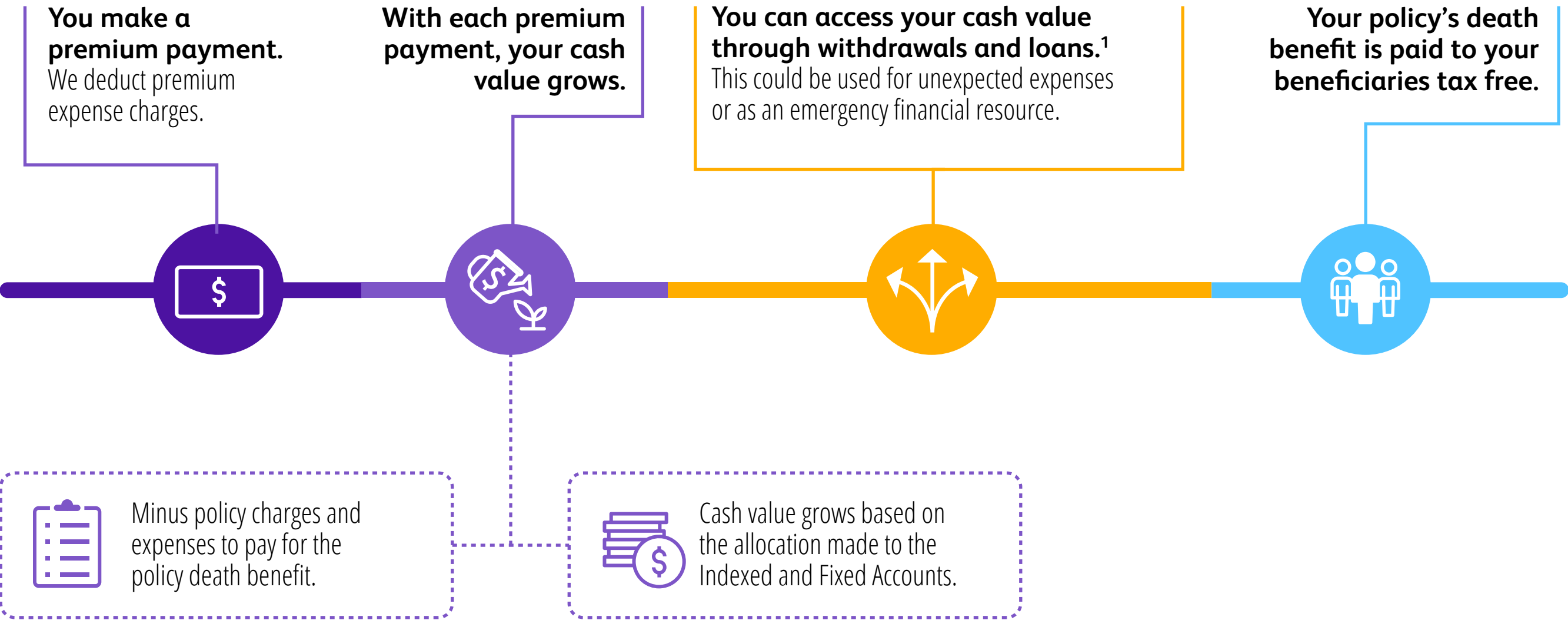


## Distribution



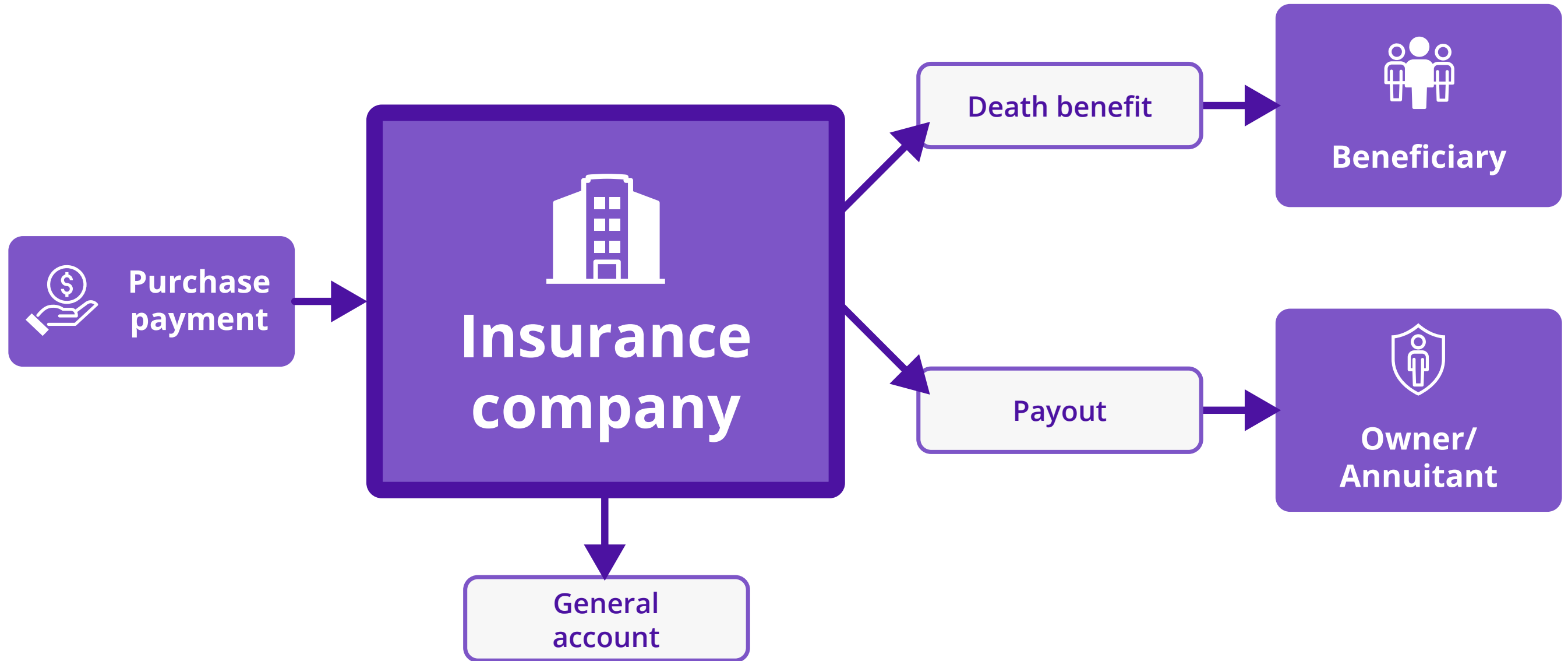
# How does indexed universal life work?

<https://www.protective.com/life-insurance/universal/indexed>



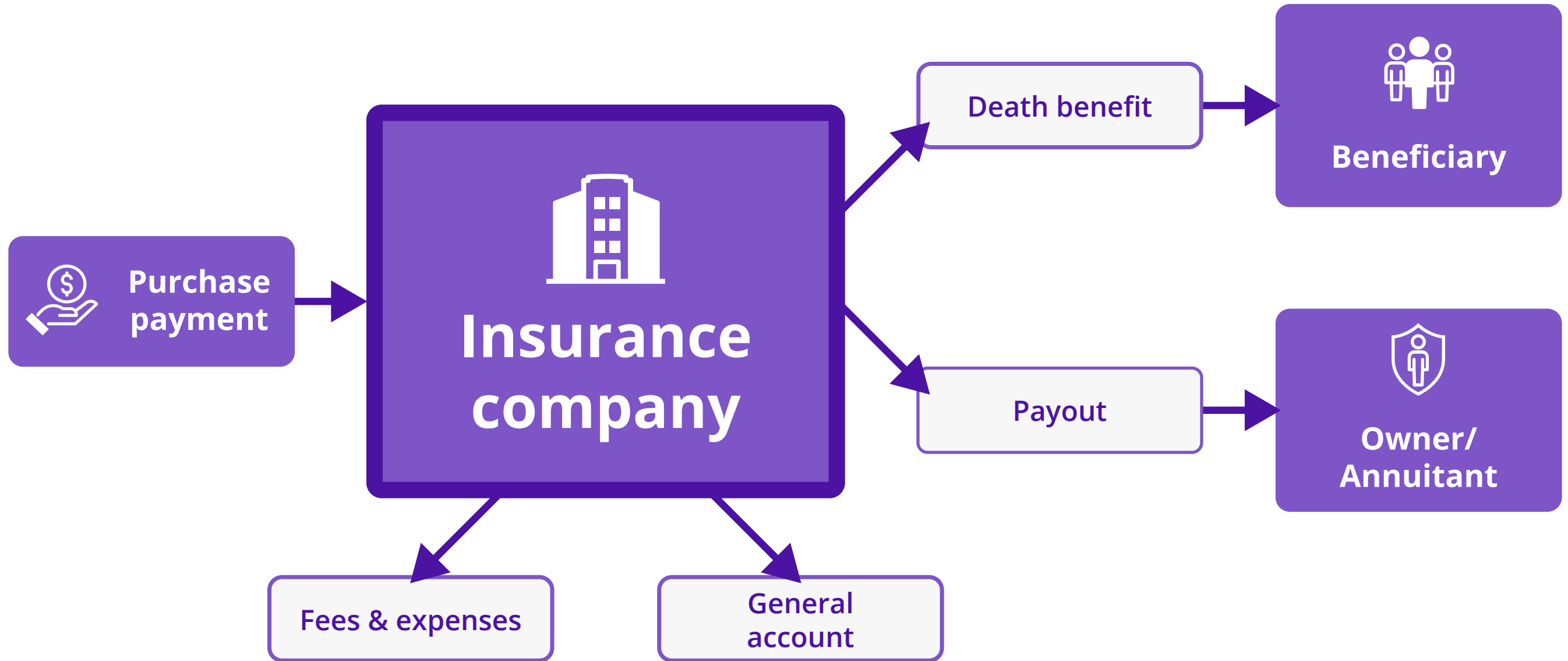
## How do immediate annuities work?

<https://www.protective.com/annuities/immediate>



## How do fixed annuities work?

<https://www.protective.com/annuities/fixed>



## Revised component for Careers page (Replaces One of America's Best Midsize Employers)

<https://www.protective.com/about-us/careers>



### 2022 Great Place to Work Certification™

Protective is proud to announce that it's achieved a workplace culture certification by Great Place to Work®.

[Read more](#) →

Read more links points to article on Investor site:

<https://investor.protective.com/newsroom/press-releases/press-release-details/2022/Protective-Earns-2022-Great-Place-to-Work-Certification/default.aspx>