

Business concepts

Key person life insurance

The concept

- Key person life insurance reimburses a business for economic loss when an employee who is critical to the success of the business dies.
- Key employee life insurance is not a specific type of policy, but a way to use life insurance to offset a significant business risk.

The rationale

A key employee may or may not be an owner; however, key employees:

- Are generally highly paid and responsible for management decisions
- Exert a significant impact on sales and enjoy a special rapport with customers and creditors

A business suffers from a key employee's death in many possible ways:

- A loss of management skill and experience
- Disruption in sales or production
- Missed business opportunities
- Credit difficulties (such as an inability to make payments or a creditor's reluctance to extend credit)
- Increased expenses associated with hiring and training a replacement

The process

- The business applies for and is the owner and beneficiary of a policy on the key employee's life.
- The "multiples of income" method is the primary method for determining the amount of insurance. The policy value is simply 5–10 times the key employee's annual salary.
- The "contribution to earnings" method takes an estimate of the key person's contribution to yearly profits and multiplies it by the estimated number of years the employee would have worked, then discounts the result to establish a current policy value.
- The "cost to replace experience" method takes the key person's compensation, subtracts the amount attributable to routine duties, and then multiplies that number by the years required to bring a replacement up to the key employee's level of experience. Add recruiting and hiring expenses to determine the appropriate amount of insurance.

Not FDIC/NCUA Insured	Not Bank or Credit Union Guaranteed	Not a Deposit
Not Insured By Any Federal Government Agency		May Lose Value

The notice and consent requirements

- In order to receive the insurance proceeds free of federal income tax, it is vital that the business comply with the notice and consent requirements.
- The business must notify the employee in writing of the intention to insure the employee's life for a stated maximum amount and obtain the employee's written consent to being insured under the policy.
- The business must inform the employee in writing that the business itself will be a beneficiary of any proceeds, either directly or indirectly.

The tax picture

- Premiums are not tax deductible, as the business is the owner and beneficiary of the policy.
- Proceeds paid to the business are typically excluded from federal income tax when the notice and consent requirements have been met. If the proceeds are paid in installments, the interest portion of each installment is taxable to the business.
- Properly structured, the insurance has no tax impact on the key employee unless the employee is also an owner. In this case, when the key employee dies, the value of the deceased owner's stock and business interests may increase in the estate when the business receives the life insurance proceeds, potentially resulting in greater estate tax.

Other advantages

- If the key person doesn't die while employed, the business can use the cash value of the policy to meet other needs.
- The policy demonstrates financial stability to creditors, or the cash value can be used as collateral for a loan.
- For key employees who are owners, the policy could help fund a buy-out of the deceased person's business interest.
- If the policy isn't needed to protect the business, the cash value can be used to provide deferred compensation or retirement income for the key employee.

The bottom line

Key person life insurance can serve a number of uses benefiting a business, both during the key employee's life and after a key employee's death.

Summary

What is key person life insurance?

Key person life insurance is designed to protect a business against potential financial loss caused by the death of an employee who is critical to the success and profitability of the business. The business is the owner and beneficiary of the policy.

Who is a key employee?

A key employee is anyone who contributes significantly to the financial success of the business. A key employee (who may or may not be an owner) is anyone who is responsible for management decisions, is highly paid, has a significant impact on sales, or has a special rapport with customers or creditors.

Why is key employee life insurance needed?

A business can suffer from a key employee's death in a number of specific ways. One is the loss of the person's management skill and experience, especially in a business with little management depth. Another is the disruption of business when clients withhold or delay business dealings until the impact of the employee's death becomes known. Credit difficulties can arise, since creditors often remain cautious until they can assess how the key person's death will affect the business. Finally, increased expenses inevitably accompany the hiring and training of a key employee's replacement.

How does it work?

The business applies for and is the owner and beneficiary of the life insurance policy. If the insured employee dies, the business receives the policy proceeds. Premiums are not deductible, and death proceeds are usually not subject to federal income tax.

Because the business holds all incidents of ownership in the policy, the death proceeds are not included in the insured employee's estate for federal estate tax purposes unless the employee is a sole or controlling shareholder. In this situation, a corporation's incidents of ownership are attributed to the shareholder-employee.

NOTE: In order to receive the insurance proceeds free of federal income tax, the business must comply with the notice and consent requirements. This includes notifying the employee in writing of the intention to insure the employee's life for a stated maximum amount, obtaining the employee's written consent to being insured under the policy, and informing the employee in writing that the business itself will be a beneficiary of any proceeds, either directly or indirectly.

What are the benefits?

Key person life insurance serves a number of uses benefiting a business, both during the key employee's life and after the employee's death. Death proceeds are generally exempt from federal income tax when the notice and consent requirements have been met.

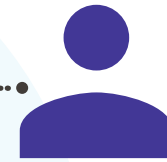
If the insured employee doesn't die while employed, the policy's cash value is available to the business. Key person life insurance demonstrates financial stability to creditors. If the key employee is an owner of the business, the policy can help fund a buy-out of a business interest when death occurs. If the employee lives, the policy's cash value can be used to provide employee compensation.

1

The employer identifies a key employee whose death would result in financial loss to the business. The business gives notice that it intends to insure the employee's life and obtains the employee's written consent.



Employer



Employee



2

The employer applies for, owns, and is the beneficiary of insurance on the key employee's life. **The premiums are not deductible by the employer.**



3

When the employee dies, the business receives the proceeds to compensate for the economic loss suffered as a result of the key person's death.



Protective refers to Protective Life Insurance Company (PLICO) and its affiliates, including Protective Life and Annuity Insurance Company (PLAIC). PLICO, founded in 1907, is located in Omaha, NE, and is licensed in all states excluding New York. PLAIC is located in Birmingham, AL, and is licensed in New York. Product availability and features may vary by state. Each company is solely responsible for the financial obligations accruing under the products it issues. Product guarantees are backed by the financial strength and claims-paying ability of the issuing company. Securities offered by Investment Distributors, Inc. (IDI) the principal underwriter for registered products issued by PLICO and PLAIC, its affiliates. IDI is located in Birmingham, Alabama.

Protective® is a registered trademark of PLICO. The Protective trademarks, logos and service marks are property of PLICO and are protected by copyright, trademark, and/or other proprietary rights and laws.

Copyright © 2004-2025, PGI Partners, Inc. 921 E. 86th Street, Suite 100, Indianapolis, Indiana 46240. All rights reserved.

This educational information is designed to provide accurate and authoritative information regarding the subject matter covered. While PGI has been diligent in attempting to provide accurate information, the accuracy of the information cannot be guaranteed. Laws and regulations change frequently and are subject to differing legal interpretations. Accordingly, neither PGI nor Protective shall be liable for any loss or damage caused, or alleged to have been caused, by the use of or reliance upon this service. Individuals should consult with their legal or tax advisor regarding their individual situation.

Protective and PGI are separate, independent entities and are not responsible for the financial condition, business or legal obligations of the other. PGI published this document through a license agreement with Protective and PGI's use of Protective's trademarks are through a license agreement with Protective.

CLAC.963243.06.25

Not FDIC/NCUA Insured	Not Bank or Credit Union Guaranteed	Not a Deposit
Not Insured By Any Federal Government Agency		May Lose Value